

Re-Imagining Measurement

When Data Science Meets Evaluation Practice

February 8 2017

MONITOR INSTITUTE



Re-imagining Measurement: The challenge

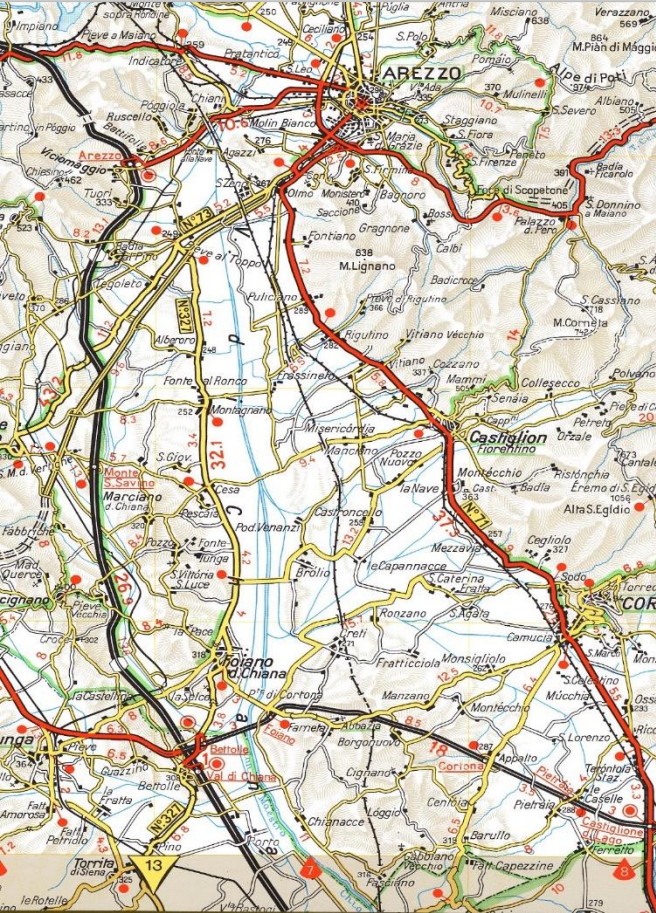


The image features a background of architectural blueprints with various technical drawings, including cross-sections of a porch cornice and a rear projection cornice. Several rolls of paper are arranged diagonally across the frame. One roll is a plain, off-white color, while the others are blue with white text and diagrams. The blue rolls are labeled with titles such as 'CABINET', 'PORCH CORNICE SCALE - 1/2" = 1'-0"', and 'REAR PROJECTION CORNICE Scale - 1/2" = 1'-0"'. The blueprints themselves contain detailed drawings with labels like 'Metal OG Gutter', 'Facia', 'Soffit', 'Bed Mold', 'Boxing', 'Plaster', and 'Cabinet'. Dimensions and scale indicators are also visible throughout the drawings.

**Our
approach**

**What do we let go of,
what do we hold on to,
and what do we need to
create anew?**

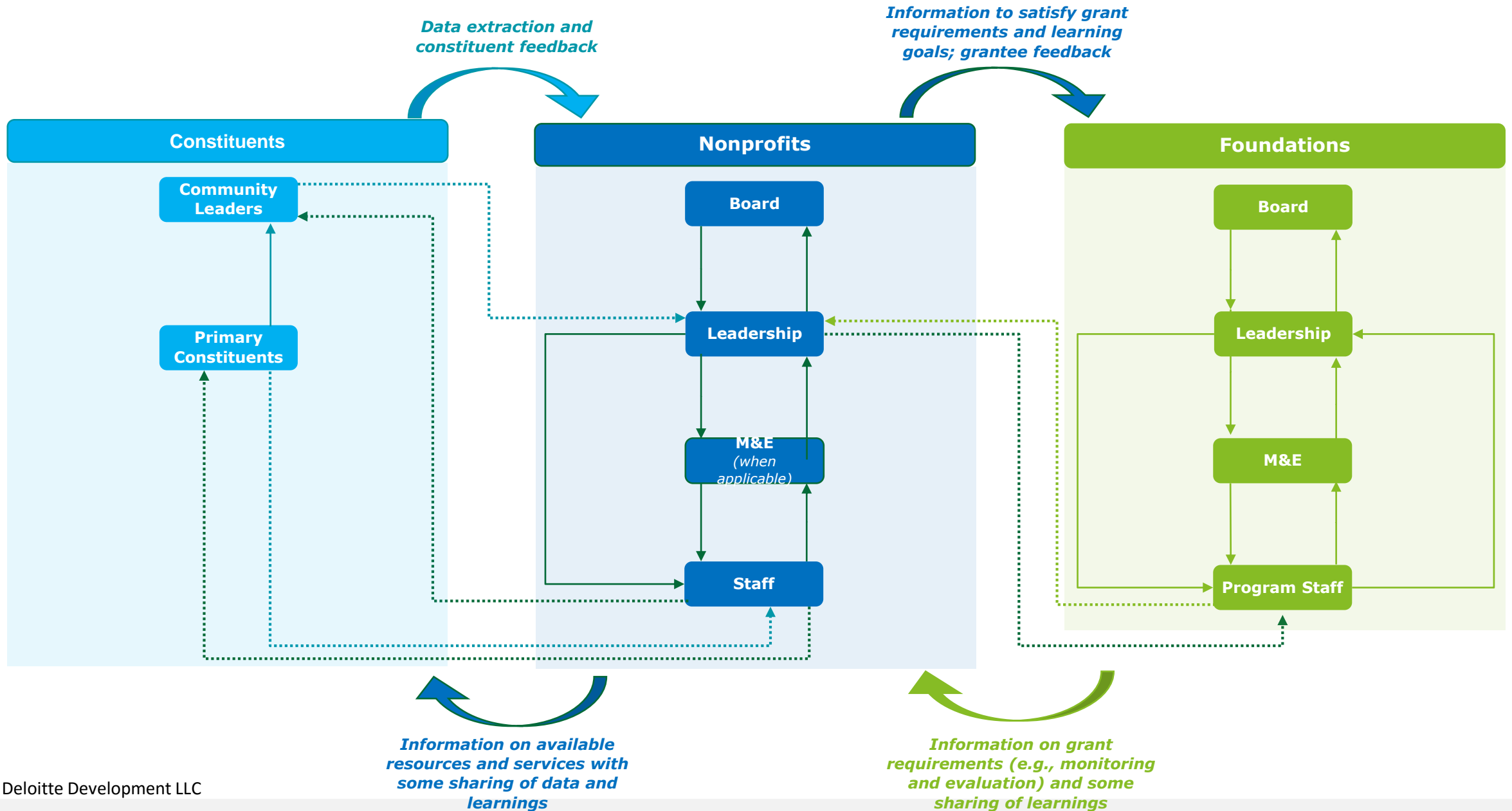
What We'll Be Talking about Today



What Do We Mean?

- What do we want to accomplish?
- Are we doing what we said we would do?
(Should we be doing something else instead?)
- How are we doing and what can we do better?
- What impact are we having?







to work i

What We've Been Doing



Trends: How will M&E and philanthropy need to adapt to the changing future landscape?



Bright spots: Who is doing interesting work within the field?



Adjacencies: Looking beyond philanthropy to find other models and parallels



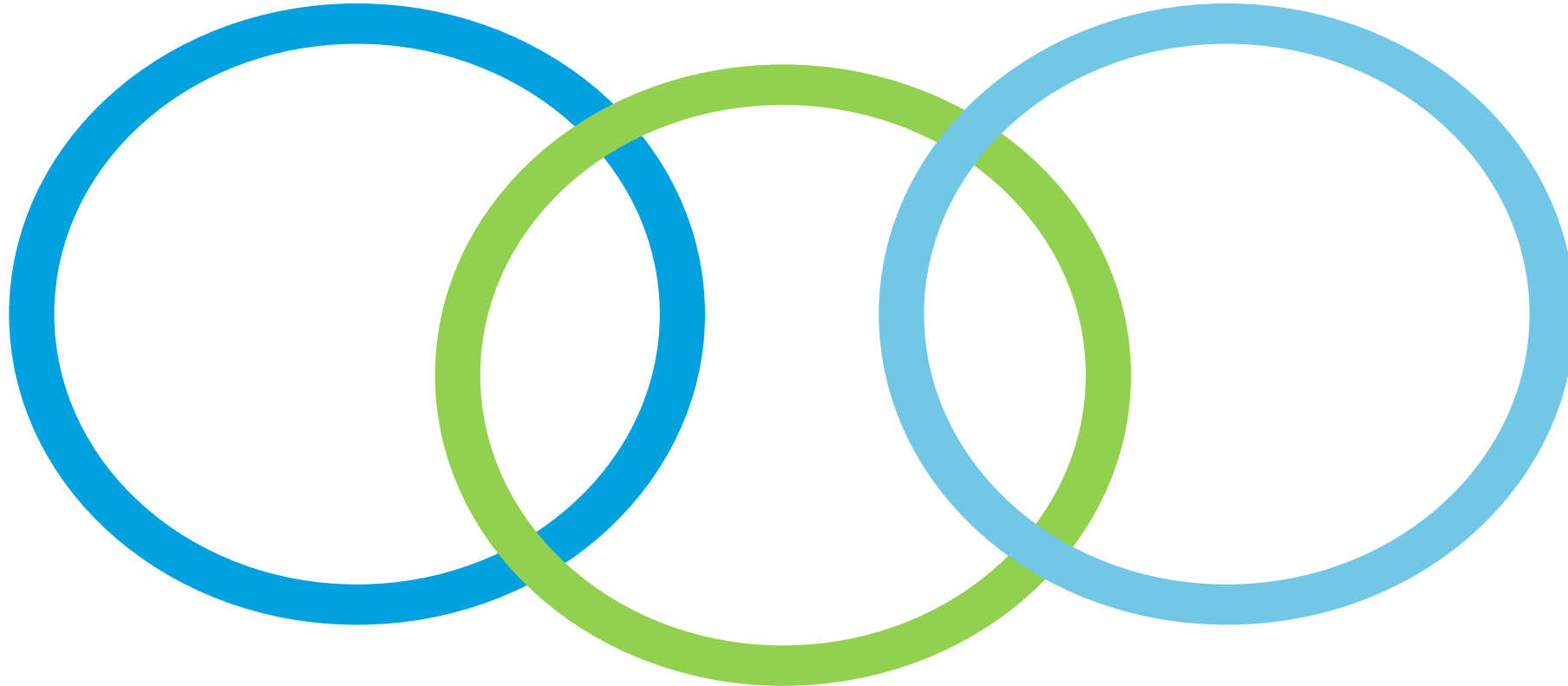
Flipping unproductive orthodoxies: challenging old assumptions that have traditionally been accepted as true or correct in the field



Expected and Better Futures



The Three Characteristics of a Better Future



**Putting
decision
making at
the center**

**Empowering
constituents and
promoting diversity,
equity, and inclusion
(DEI)**

**Learning at
scale**

Expected Future



MORE EFFECTIVELY PUTTING DECISION MAKING AT THE CENTER

- Limited capacity
- High reporting burden
- Lack of sufficient and high-quality data
- Difficulty acting as learning organization

BETTER EMPOWERING CONSTITUENTS AND PROMOTING DEI

- Incremental DEI improvements
- Limited constituent voice
- Efforts not widely shared with or used to directly benefit or empower constituents
- Struggle with data ethics issues

MORE PRODUCTIVELY LEARNING AT SCALE

- Insufficient sharing of learnings
- Insufficient coordination of learning and evidence creation
- Insufficient development of shared standards and systems

Better Future



MORE EFFECTIVELY PUTTING DECISION MAKING AT THE CENTER

- Sufficient capacity
- “Continuous” data and learning
- What’s needed for on-the-ground decision making
- Integration of data and social science

BETTER EMPOWERING CONSTITUENTS AND PROMOTING DEI

- Equity consistent focus
- Constituent feedback as standard practice
- Empower constituents to make key decisions
- Data rights widely adhered to

MORE PRODUCTIVELY LEARNING AT SCALE

- Data, learning, and knowledge shared openly and widely
- Work together on knowledge gaps, learning agendas, and collective evidence
- Greater investment in the supply chain of data
- Integrated data at scale needed to assess social impact
- Evaluation synthesis, replication, and meta-evaluation

Bright spots

- Putting decision making at the center
- Empowering constituents
- Learning at scale



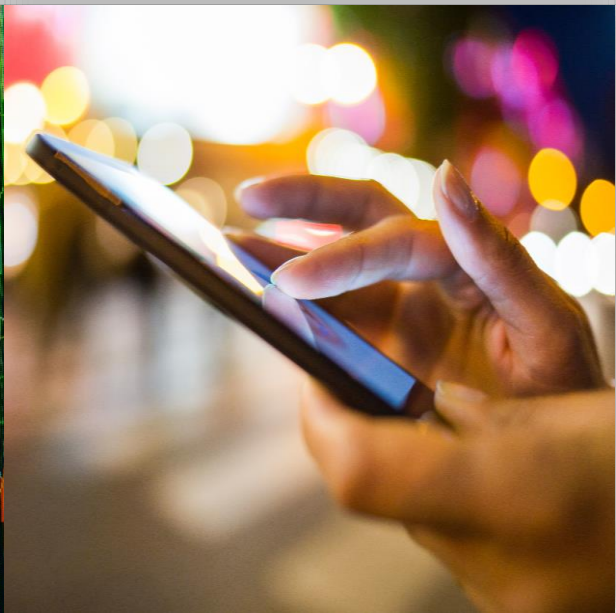
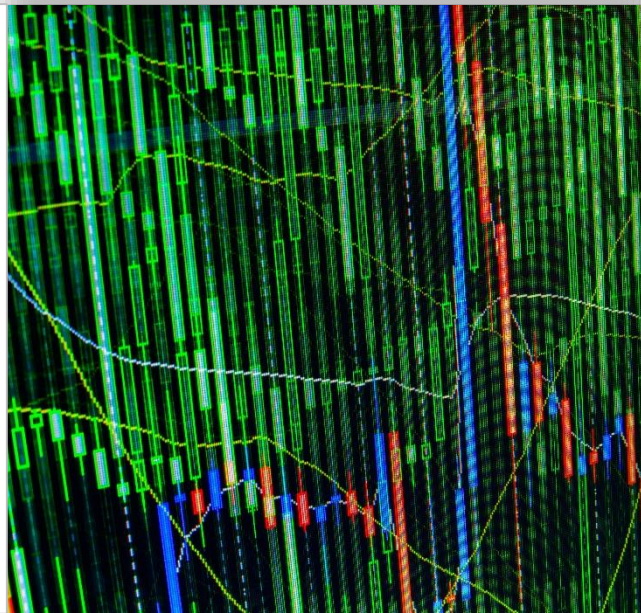
Bright Spots: Putting Decision Making at the Center



Bright Spots: Empowering Constituents and Promoting DEI



Bright Spots: Learning at Scale

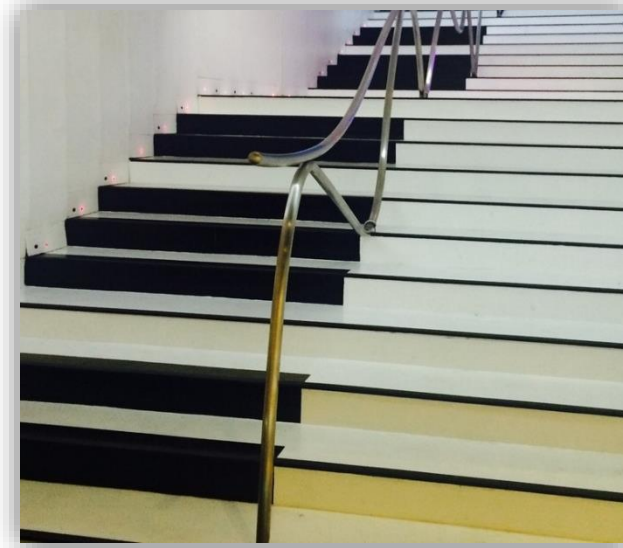


Adjacencies

- Putting decision making at the center
- Empowering constituents
- Learning at scale



Adjacencies: Putting Decision Making at the Center



Adjacencies: Empowering constituents and promoting DEI



Adjacencies: Learning at Scale



New Ideas and Experiments

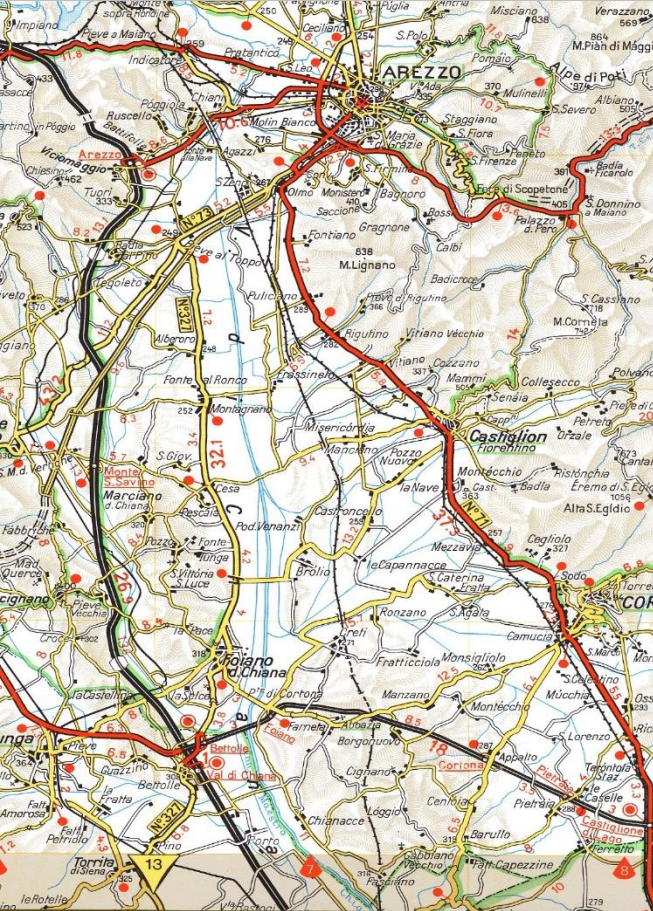


What would it look like if...

- after-action evaluation reports became obsolete?
- donors enabled constituents to decide how funding got spent?
- instead of “evidence-based decision-making” we had “decision-based evidence-making”?
- we had a *civic tech-like* effort for philanthropy?

Thank you!

Rhonda Evans, PhD & Tony Siesfeld, PhD



MONITOR INSTITUTE